



PARTS LIST

HK

HK-2HP, 3.5HP

CONTENTS

FIG. 1	COWLING . FUEL	3
FIG. 2	GASOLINE ENGINE	5
FIG. 3	BRACKET	8
FIG. 4	UPPER CASING	9
FIG. 5	LOWER CASING. DRIVE	10

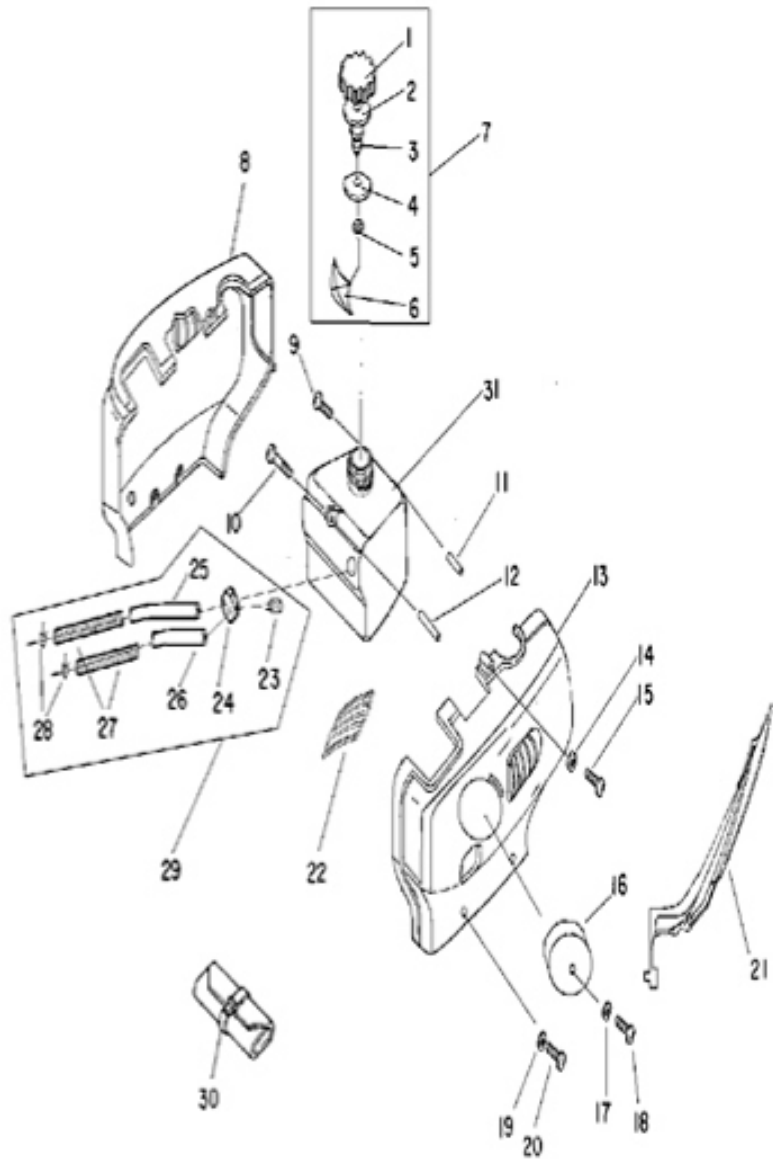


FIG. 1 COWLING . FUEL

REF.NO.	PART NO.	DESCRIPTION	QTY	REMARKS
			SF2	
1	HK2-01-1	FUEL CAP	1	
2	HK 2-01-2	CAP,AIR	1	
3	HK 2-01-3	ENTRANCE,AIR	1	
4	HK 2-01-4	GASKET	1	
5	HK 2-01-5	BACKING,DRAFT BAR	1	
6	HK 2-01-6	DRAFT BAR	1	
7	HK 2-01-01	CAP ASSEMBLY	1	
8	HK 2-01-7	LEFT APRON	1	
9	GB818-5-65	SCREW	1	
10	GB818-5-80	SCREW	1	
11	HK 2-01-8	SPACER	1	
12	HK 2-01-9	SPACER	1	
13	HK 2-01-10	RIGHT APRON	1	
14	GB6170-4	NUT	3	
15	GB818-4-18	SCREW	3	
16	HK 2-01-11	AIR SILENCER	1	
17	GB97-5	WASHER	1	
18	GB818-5-12	SCREW	1	
19	GB97-5	WASHER	4	
20	GB70-5-10	SCREW	4	
21	HK 2-01-12	DECAL SET	1	
22	HK 2-01-13	INTAKE	1	
23	HK 2-01-14	FILTER	1	
24	HK 2-01-15	PIPE WASHER,SPRING	1	
25	HK 2-01-16	PIPE,FUEL 1	1	
26	HK 2-01-17	PIPE,FUEL 2	1	
27	HK 2-01-18	SPRING,FILLER PIPE	2	

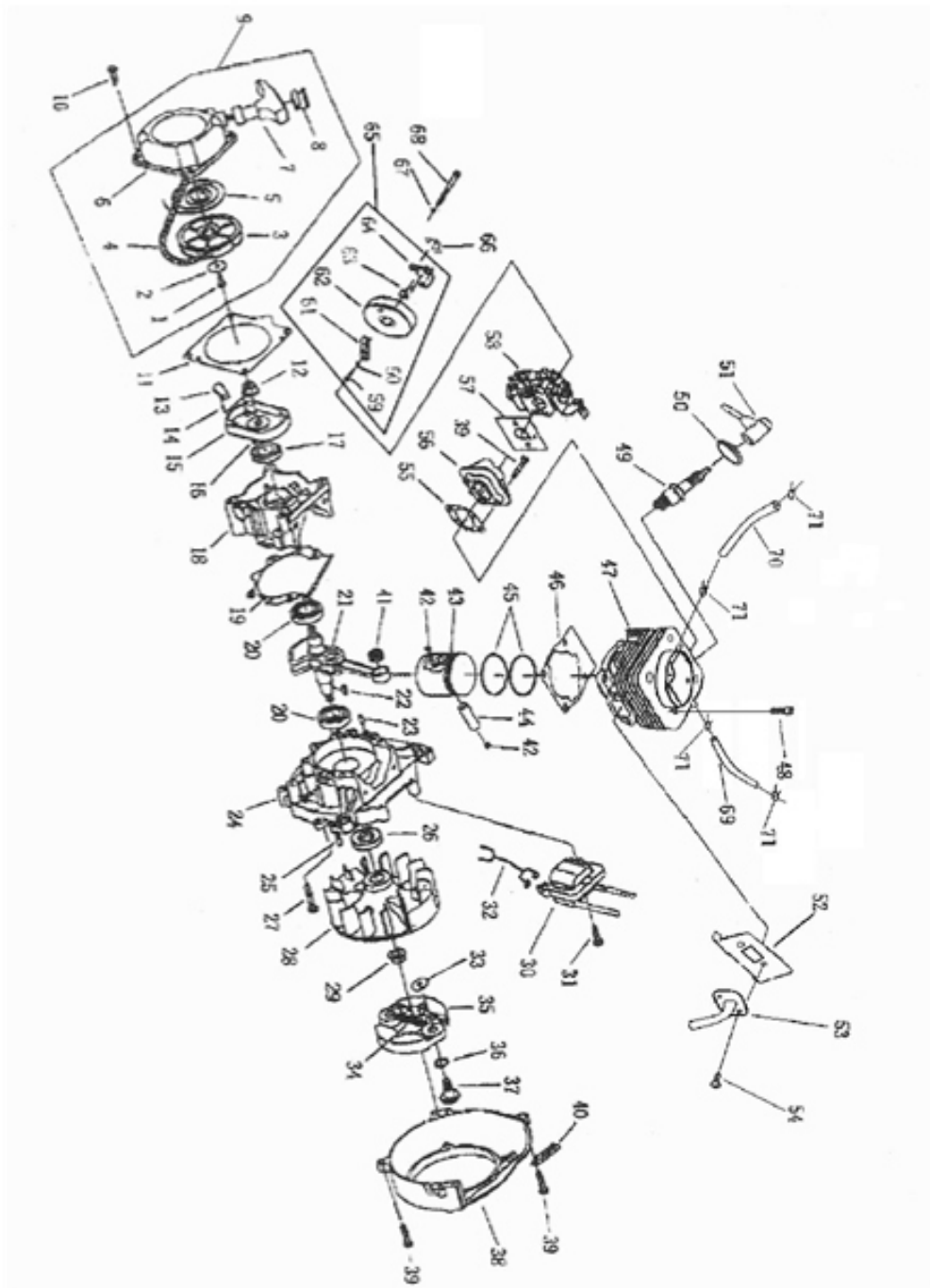


FIG. 2 GASOLINEENGINE

REF.NO.	PART NO.	DESCRIPTION	QTY				REMARKS
			SF2				
1	GB818-5-12	SCREW	1				
2	GB96-5	WASHER	1				
3	1E34C.08-6	REEL	1				
4	1E34C.08-8	STARTER ROPE	1				
5	1E34C.08-9	STARTER SPRING	1				
6	1E34C.08-1	STARTER CASE	1				
7	1E34C.08-7	STARTER HANDLE	1				
8	1E34C.08-13	ROPE ANCHOR	1				
9	1E34C.08-01	STARTER ASSEMBLY	1				
10	GB9074.4-5-16	SCREW	4				
11	1E36.00-11	STARTER GASKET	1				
12	GB6172-8	NUT	1				
13	1E34C.08-4	ACTING PAW,STARTER	1				
14	1E34C.08-5	SPRING,STARTER	1				
15	1E34C.08-3	DRIVING PLATE,STARTER	1				
16	GB896-4	E-SPRING	1				
17	1E34.01-6	OIL SEAL	1				
18	1E40.01-1	CRANKCASE 1	1				
19	1E40.01-4	GASKET,CRANKCASE	1				
20	GB276-6202/P5	BALL BEARING	2				
21	1E40.02-01	CRANKSHAFT ASSEMBLY	1				
22	GB1099-3-13	WOODRUFF KEY	1				
23	GB119.1-5-12	KNOCK	2				
24	1E40.01-2	CRANKCASE 2	1				
25	GB119.1-4-12	PIN,DOWEL	2				
26	1E40.01-5	OIL SEAL	1				
27	GB5787-5-30	BOLT	4				

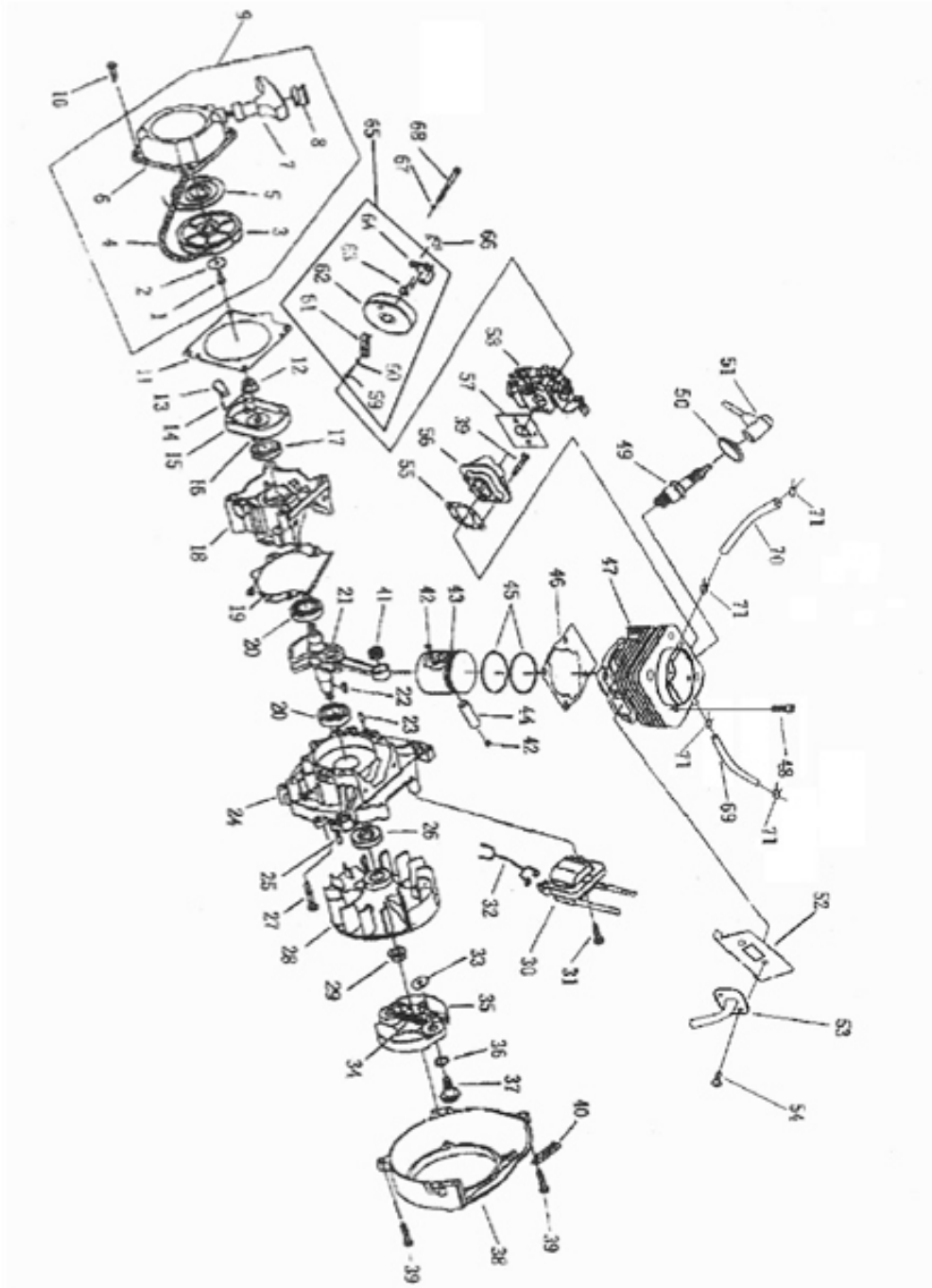


FIG. 2 GASOLINEENGINE

REF.NO.	PART NO.	DESCRIPTION	QTY				REMARKS
			SE2				
28	1E40.06-01	FLYWHEEL CUP	1				
29	GB6177-8-1	NUT,MAGNETO	1				
30	1E40.07-01	IGNITION COIL ASSEMBLY	1				
31	GB9074.4-5-25	SCREW	2				
32	1E40.07-1	EXTENSION CORD	1				
33	GB97-8	WASHER	2				
34	1E36.09-1	SPRING,CLUTCH	1				
35	1E36.09-02	BAR,CLUTCH	2				
36	GB955-10	WASHER,SPRING	2				
37	1E36.09-2	BOLT	2				
38	1E40.00-7	COVER,FLYWHEEL CUP	1				
39	GB9074.4-5-25	SCREW	6				
40	1E40.00-10	CLAMP	1				
41	GB5480-10-13-16	NEEDLE BEARING	1				
42	1E40.02-4	CLIP,PISTON PIN	2				
43	1E40.02-1	PISTON	1				
44	1E40.02-3	PISTON PIN	1				
45	1E40.02-2	PISTON RING	2				
46	1E40.01-7	GASKET,CYLINDER	1				
47	1E40.01-3	CYLINDER HEAD	1				
48	GB70-5-20	SCREW	4				
49	1E40.07-02	SPARK PLUG	1				
50	1E40.07-2	WASHER,PLUG CAP ASSEMBLY	1				
51	1E40.07-3	PLUG CAP ASSEMBLY	1				
52	1E40.00-8	GASKET,BLOW-OFF PIPE	1				
53	1E40.05-00	BLOW-OFF PIPE	1				
54	GB70-6-20	SCREW	2				

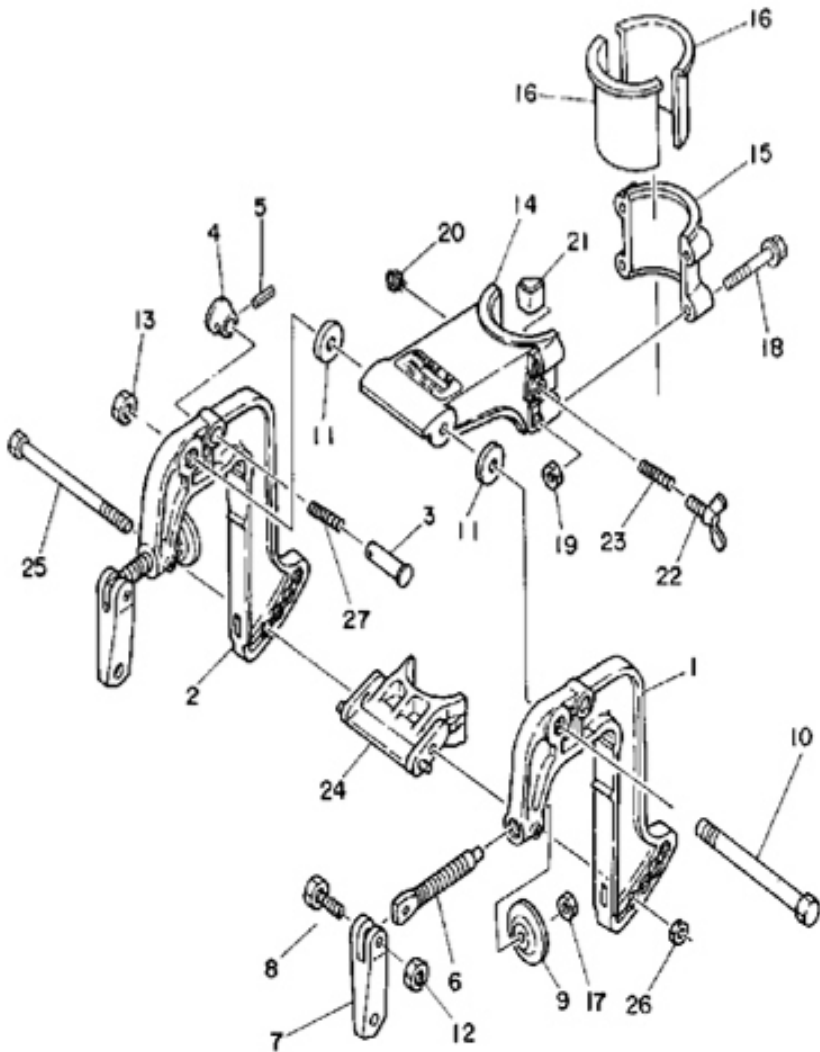


FIG. 3 BRACKET

REF.NO.	PART NO.	DESCRIPTION	QTY				REMARKS
			SF2				
1	HK 2-02-1	BRACKET,CLAMP	1				
2	HK 2-02-2	BRACKET,CLAMP	1				
3	HK 2-02-3	SHAFT,STOPPER	1				
4	HK 2-02-4	KNOB,STOPPER	1				
5	GB879.2-3-14	PIN,SPRING	1				
6	HK 2-02-5	SCREW,TRANSOM CLAMP	2				
7	HK 2-02-6	HANDLE,TRANSOM CLAMP	2				
8	GB819.2.4-16	SCREW	2				
9	HK 2-02-7	PAD,TRANSOM CLAMP	2				
10	GB5780-8-100	BOLT	1				
11	GB96-8	WASHER	2				
12	GB6170-4	NUT	2				
13	GB889.1-8	LOCKNUT	1				
14	HK 2-02-8	BRACKET,SWIVEL 1	1				
15	HK 2-02-9	BRACKET,SWIVEL 2	1				
16	HK 2-02-10	BUSHING,PIVOT SHAFT	2				
17	GB6170-5	NUT	2				
18	GB5780-6-45	BOLT	4				
19	GB889.1-6	LOCKNUT	4				
20	HK 2-02-11	NIPPLE,GREASE	1				
21	HK 2-02-12	PLATE,FRICTION	1				
22	HK F2-02-13	BOLT,WING	1				
23	HK 2-02-14	SPRING,COMPRESSION	1				
24	HK 2-02-15	RECEIVER,THRUST	1				
25	GB5780-6-100	BOLT,RECEIVER	1				
26	GB889.1-6	LOCKNUT	1				
27	HK 2-02-16	SPRING,SHAFT	2				

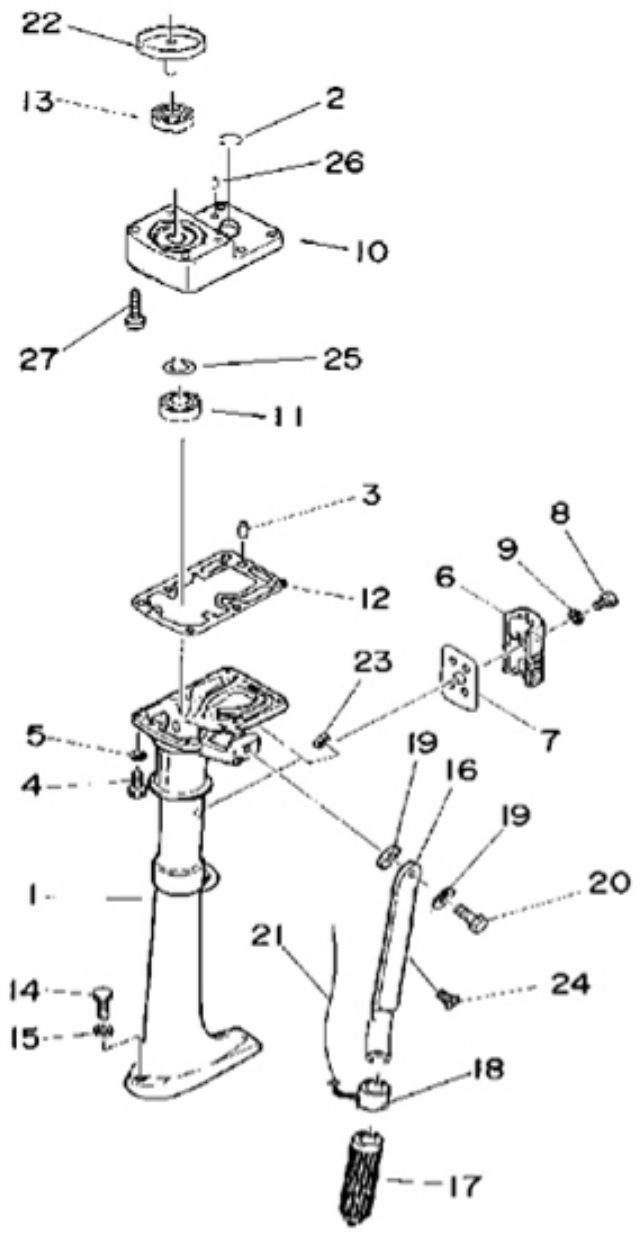


FIG. 4 UPPERCASING

REF.NO.	PART NO.	DESCRIPTION	QTY				REMARKS
			SF2				
1	HK 2-03-1	CASING,UPPER	1				
2	HK 2-03-2	O-RING	2				
3	GB119.1-5-12	PIN,DOWEL	2				
4	GB5780-6-25	BOLT	6				
5	GB97-6	WASHER	6				
6	HK 2-03-3	COVER,UPPER CASING	1				
7	HK 2-03-4	GASKET,UPPER CASING	1				
8	GB70-6-10	SCREW,PAN HAND	1				
9	GB97-6	WASHER,PLATE	1				
10	HK 2-03-5	CONNECTOR COUPLING	1				
11	HK 2-03-6	OILSEAL	1				
12	HK 2-03-7	GASKET,UPPER CASING	1				
13	GB276-6004	BALL BEARING	1				
14	GB5780-6-30	BOLT	1				
15	GB97-6	WASHER,PLATE	1				
16	HK 2-03-8	HANDLE,PIVOT STEERING	1				
17	HK 2-03-9	GRIP,STEERING HANDLE	1				
18	HK 2-03-10	SEAT,GRIP	1				
19	GB96-8	WASHER,PLATE	2				
20	GB5780-8-35	BOLT	1				
21	HK 2-03-11	THROTTLE SHAFT	1				
22	HK 2-03-12	TRAY,CLUTCH	1				
23	GB889.1-8	NUT	1				
24	GB819.2-4-16	SCREW	2				
25	GB894.1-20	E-RING	1				
26	HK 2-03-13	ENTRANCE,WATER	1				
27	GB70-6-35	SCREW	4				

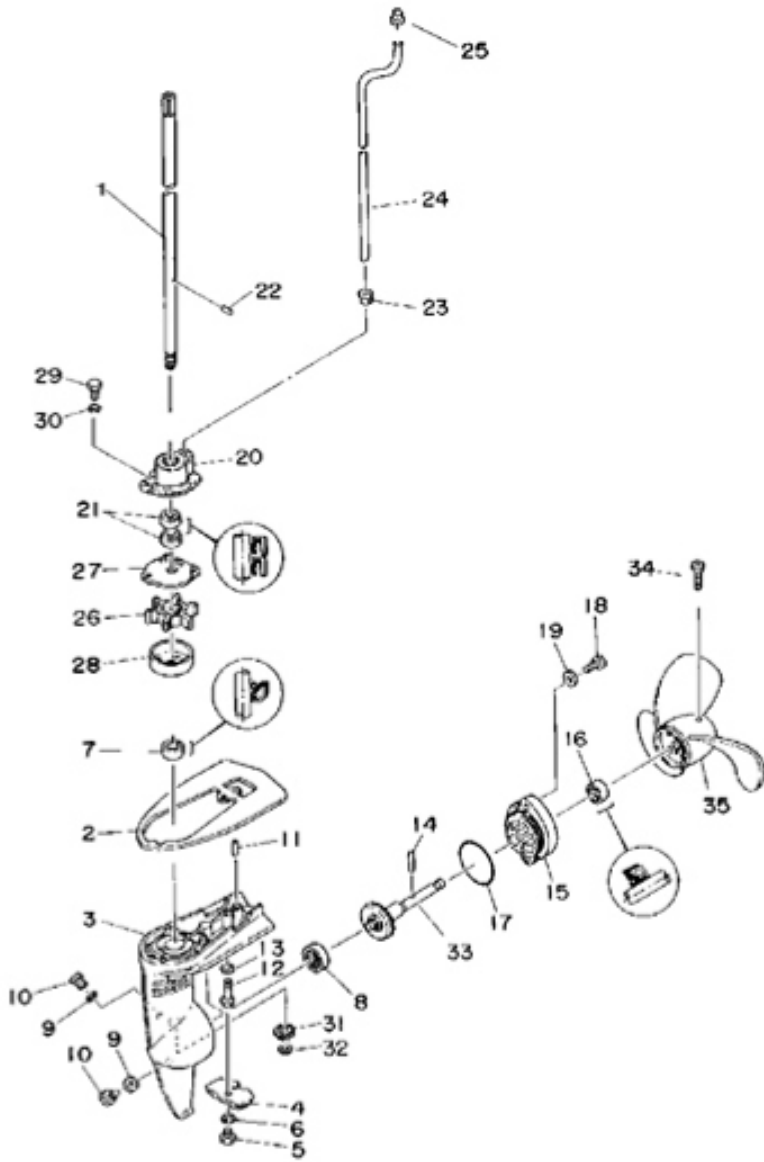


FIG. 5 LOWERCASINGDRIVE

REF.NO.	PART NO.	DESCRIPTION	QTY				REMARKS
			SF2				
1	HK 2-04-1	DRIVE SHAFT ASSEMBLY	1				
2	HK 2-04-2	PLATE	1				
3	HK 2-04-01	CASING,LOWER	1				
4	HK 2-04-3	ANODE	1				
5	GB5780-6-14	BOLT,FLANGE	1				
6	GB97-6	WASHER,INTERNAL TOOTH	1				
7	HK 2-04-4	OIL SEAL	1				
8	GB276-6000	BALL BEARING	1				
9	HK 2-04-5	GASKET	2				
10	GB5780-6-8	PLUG,STRAIGHT SCREW	2				
11	GB119.1-5-12	PIN,DOWEL	2				
12	GB5780-6-30	BOLT	1				
13	GB97-6	WASHER	1				
14	GB119.1-3-20	PIN,STRAIGHT	1				
15	HK 2-04-02	CAP,LOWER CASING	1				
16	HK 2-04-4	OIL SEAL	1				
17	HK 2-04-6	O-RING	1				
18	GB70-6-14	BOLT	2				
19	GB97-6	WASHER,PLATE	2				
20	HK 2-04-7	COVER,WATER PUMP HOUSING	1				
21	HK 2-04-4	OIL SEAL	2				
22	GB119.1-3-8	PIN,DOWEL	1				
23	HK 2-04-8	DAMPER,WATER SEAL	1				
24	HK 2-04-9	TUBE,WATER	1				
25	HK 2-04-10	DAMPER,WATER SEAL	1				
26	HK 2-04-11	IMPELLER	1				
27	HK 2-04-12	OUTER PLATE,CARTEIDGE	1				

