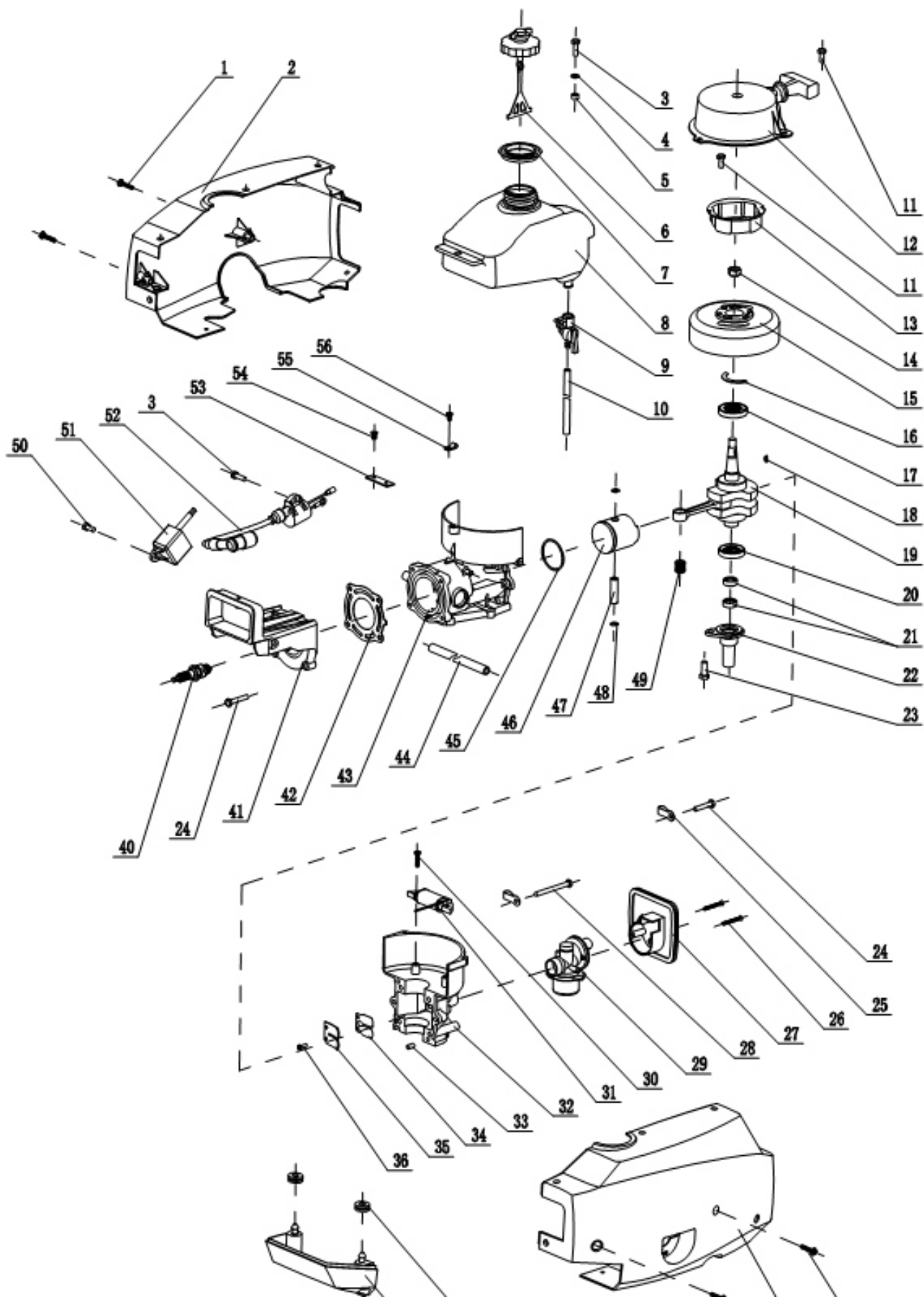




HK PARTS LIST

HK-4.0HP

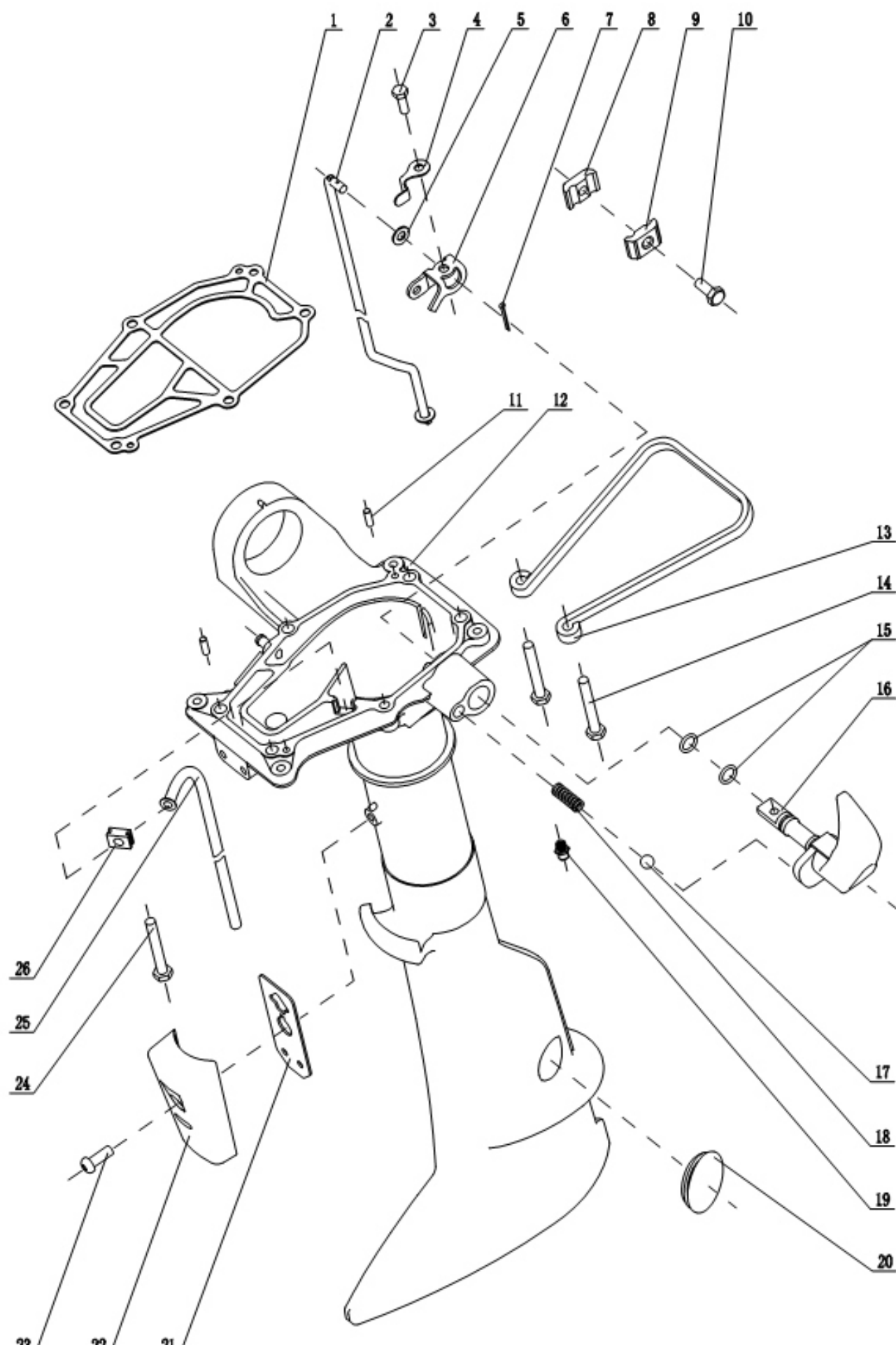
1 汽油机
1 GASOLINE ENGINE



1汽油机
1 GASOLINE ENGINE

序号 Ref No	图号 Part No	名称及规格 Description	数量 Q'ty	序号 Ref No	图号 Part No	名称及规格 Description	数量 Q'ty
1-1	GB/T9074.3	十字槽盘头螺钉组合 M6×25 SCREW M6×25	4	1-29		化油器总成 CARBUFETOR	1
1-2		右外罩 RIGHT COVER	1	1-30	GB/T9074.4	十字槽盘头螺丝组合 M5×20 SCREW M5×20	2
1-3	GB5781	螺栓 M6×20 BOLT M6×20	3	1-31		锡钢片 TUTANIA PATCH	1
1-4	GB/T97.1	平垫圈 6 WASHER 6	1	1-32		曲轴箱盖 CRANKCASE	1
1-5		油壶套管 φ7×10×6 OIL POT DRIVE PIPE	2	1-33	GB/T119.2	销子 6×12 PIN 6×12	2
1-6		油壶盖总成 FUEL TANK CAP ASSEMBLY	1	1-34		进气阀簧片 VALVE REED FOR ADMISSION	1
1-7		油壶防尘圈 FUEL TANK DUST PLATE	1	1-35		进气阀压板 VALVE CLAMP FOR ADMISSION	1
1-8		油壶 FUEL TANK	1	1-36	GB/T9074.4	十字槽盘头螺丝组合 M4×12 SCREW M4×12	2
1-9		油阀总成 OIL VALVE ASSEMBLY	1	1-37		左外罩 LEFT COVER	1
1-10		进油管 5×9×270 PIPE FUEL 5×9×270	1	1-38		火花塞外罩橡胶套 SPARK PLUG COVER WASHER	2
1-11	GB5781	螺栓 M6×12 MOLT M6×12	5	1-39		火花塞外罩 SPARK PLUG COVER	1
1-12		起动机总成 STARTER ASSY	1	1-40		火花塞 SPARK PLUG	1
1-13		被动盘 PRTVING PLATE STARTER	1	1-41		缸头盖 CYLINDER HEAD	1
1-14	GB/T6170	螺母 M10×1.25 NUT M10×1.25	1	1-42		汽缸盖衬垫 CYLINDER HEAD GASKET	1
1-15		飞轮总成 FIYWHEEL	1	1-43		曲轴箱体 BLOCK ASSY CYLINDER	1
1-16		油封挡环 SEAL OIL RING	1	1-44		排水管 φ5×9×160 PIPE FUEL φ5×9×160	1
1-17		油封 20×42×8 SEAL OIL 20×42×8	1	1-45		活塞环 PISTON RING	1
1-18		半圆键 4×5.3 WOODRUFF KEY 4×5.3	1	1-46		活塞 PISTON	1
1-19		曲轴连杆总成 CRANKSHAFT ASSEMBLY	1	1-47		活塞销 PISTON PIN	1
1-20		油封 20×38×8 SEAL OIL 20×38×8	1	1-48		活塞销卡簧 CLIP PISTON PIN	2
1-21		油封 10×20×7 SEAL OIL 10×20×7	2	1-49		滚针轴承 K10×14×15 NEEDLE BEARING K10×14×15	1
1-22		传动轴保护套 TRANSMISSION SHAFT PROTECTOR	1	1-50	GB5781	螺栓 M6×16 BOLT M6×16	1
1-23	GB5781	螺栓 M8×20 BOLT M8×20	1	1-51		整流器 RECTIFIER	1
1-24	GB5781	螺栓 M6×30 BOLT M6×30	6	1-52		高压包 UNIT IGNITER	1
1-25	159.00-10	管夹 CLAMP	2	1-53		连接锁片 JOINT FLAKELET	7
1-26		沉头螺钉 M4×35 SCREW M4×35	2	1-54		沉头螺钉 M5×10 SCREW M5×10	14
1-27		空滤器外罩 AIR FILTER COVER	1	1-55		线卡 CLAMP	1
1-28	GB5781	螺栓 M6×64 BOLT M6×64	4	1-56	GB/T9074.3	十字槽盘头螺钉组合 M5×10 SCREW M5×10	1

2 艀杆部件
2 DRIVE SHAFT HOUSING

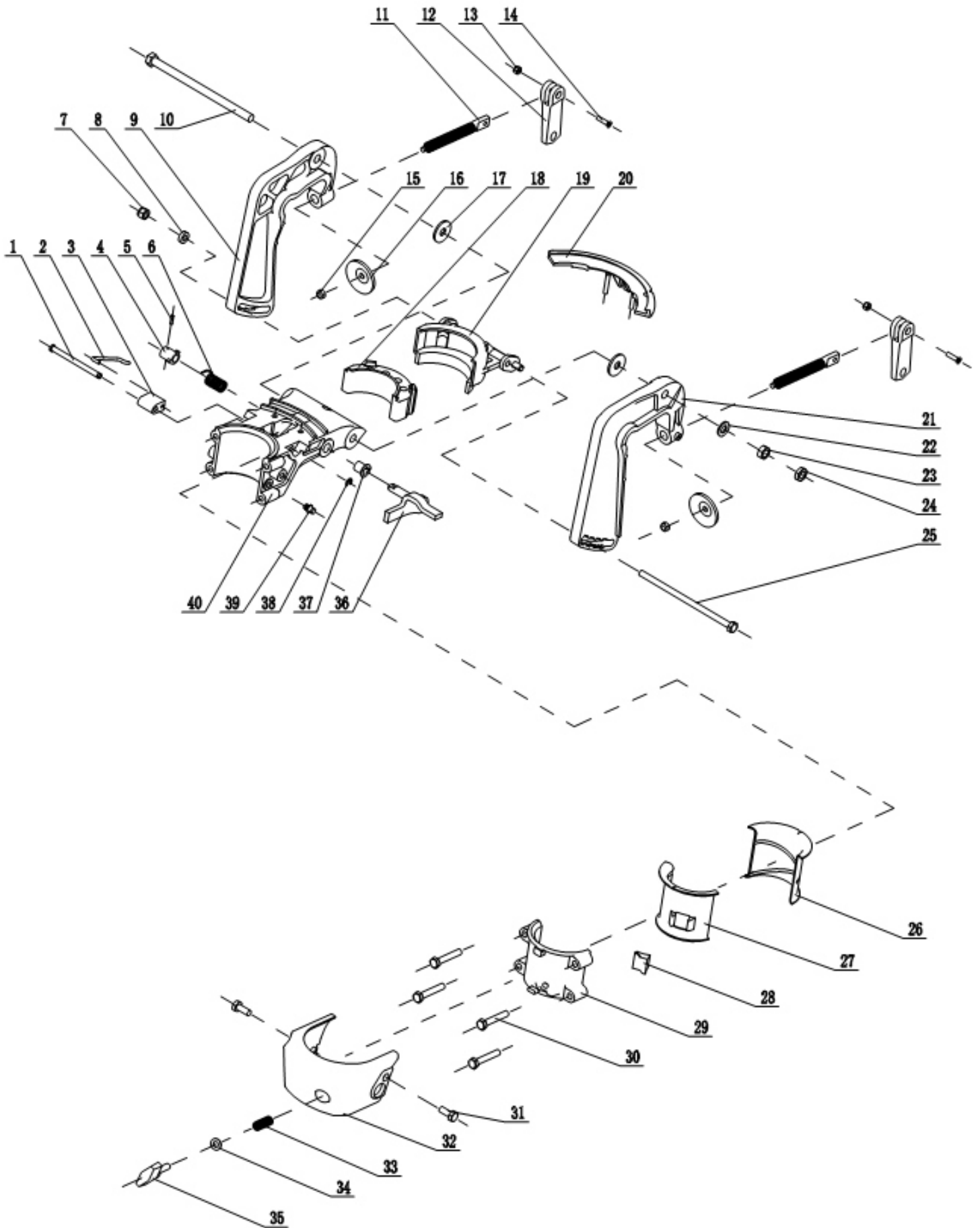


2 舰杆部件

2 DRIVE SHAFT HOUSING

序号 Ref No	图号 Part No	名称及规格 Description	数量 Q'ty	序号 Ref No	图号 Part No	名称及规格 Description	数量 Q'ty
2-1	HK2.5S.15-2	连接密封垫 GASKET UPPER CASING	1	2-15	GB/T3452.1	O 形圈 12.5×1.8 “O”RING CLUTCH 12.5×1.8	2
2-2	HK2.5S.11-1	摆架拉杆 CLUTCH ROD	1	2-16	HK2.5S.11-01	变档手柄组成 LEVER CLUTCH	1
2-3	GB/T9074.14	六角螺栓组 M5×12 BOLT M5×12	1	2-17		S8 定位钢珠 BALL HOLDER S8	1
2-4	HK2.5S.11-5	摆架挡片 SPACER CLUTCH SHAFT	1	2-18	HK2.5S.11-3	变档弹簧 SPRING CLUTCH NOTCH	1
2-5	GB/T97.1	平垫圈 6 WASHER 6	1	2-19	HK2.02-11	黄油嘴 NIPPLE GREASE	1
2-6	HK2.5S.11-2	变档摆架 ARM CLUTCH ROD	1	2-20	HK2.5S.15-3	调节孔盖 COVER CLUTCH ADJUST HOLE	1
2-7	GB/T91	开口销 1.6×14 PIN COTTER 1.6×14	1	2-21	HK2.5S.15-4	排气罩密封垫 GASKET COVER UPPER CASING	1
2-8	HK2.5S.11-8	调整下压块 CONNECTOR CLUTCH ROD 1	1	2-22	HK2.5S15-1	排气罩 COVER UPPER CASING	1
2-9	HK2.5S.11-7	调整上压块 CONECTOR CLUTCH ROD 2	1	2-23	GB/T9074.14	十字槽盘头螺钉 M6×16 SCREW M6×16	1
2-10	GB/T9074.14	六角螺栓组 M6×20 BOLT M6×20	3	2-24	GB/T9074.14	六角螺栓组合 M6×35 SCREW M6×16	4
2-11	GB119	销子 4×12 PIN 4×12	2	2-25	HK2.5S.13-1	水泵出水管 TUBE WATER	1
2-12	HK2.5S.15 -01	舰杆 UPPER CASING	1	2-26	HK2.5S.13-2	出水管密封块 GROMMET WATER TUBE UPPER	1
2-13		提把 SHAFT	1				
2-14	GB/T9074.14	六角螺栓组合 M6×42 BOLT M6×42	2				

3 托架部件
3 CLAMP BRACKET

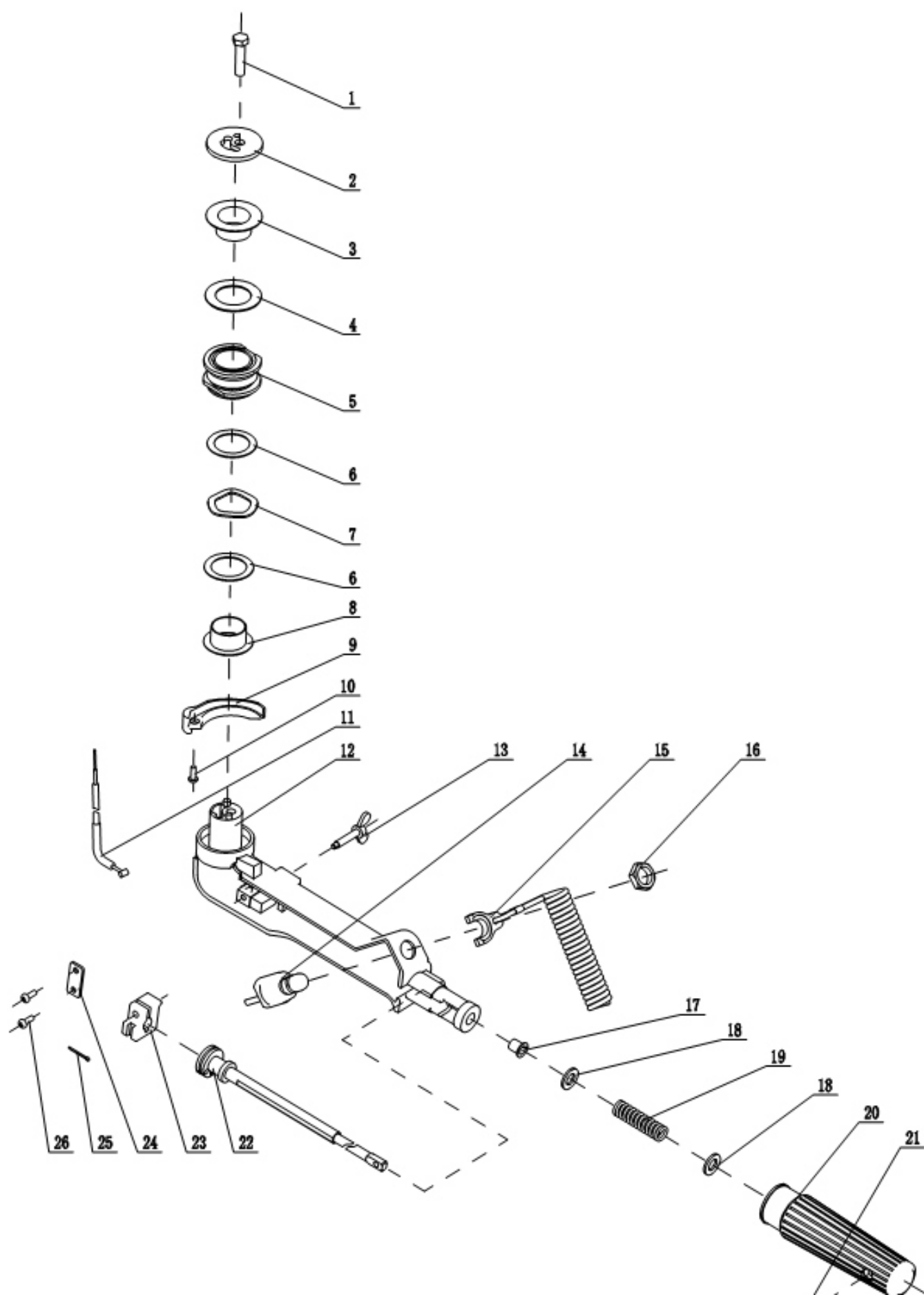


3 托架部件
3 CLAMP BRACKET

序号 Ref No	图号 Part No	名称及规格 Description	数量 Q'ty	序号 Ref No	图号 Part No	名称及规格 Description	数量 Q'ty
3-1	HK2.5S.17-1 5	挡块轴 AXLE	1	3-22	GB97.1	平垫 8 WASHER 8	1
3-2	HK2.5S.17-1 6	挡块拉杆 BLOCK SHAFT	1	3-23	GB/T6170	六角螺母 M8 NUT M8	1
3-3	HK2.5S.17-1 4	上倾挡块 INCLINE BLOCK	1	3-24	GB/T6172.1	六角薄螺母 M8 NUT M8	1
3-4	HK2.5S.17-1 2	上倾摇臂 LEVER LOCK ARM ROCKER REVERSE	1	3-25	GB5781	螺栓 M6×125 BOLT M6×125	1
3-5	GB/T879.2	弹性圆柱销 2×10 SPRING PIN 2×10	1	3-26	HK2.5S.17-5	转架后衬套 BEHIND BUSHING PIVOT SHAFT	1
3-6	HK2.5S.17-1 3	上倾扭簧 LEVER SPRING REVERSE LOCK	1	3-27	HK2.5S.17-4	转架前衬套 FRONT BUSHING PIVOT SHAFT	1
3-7	GB/889.1	六角锁紧螺母 M6 NUT M6	1	3-28	HK2.5S.17-3	锁紧压块 PLATE FRICTION	1
3-8	HK2.5S.17-9	垫圈 6.2×12×3.6 WASHER 6.2×12×3.6	1	3-29	HK2.5S17-1	小转架 SMALL BRACKET SWIVEL	1
3-9	HK2.5S.17-8	右托架夹 RIGHT BRACKET CLAMP	1	3-30	GB/9074.14	六角螺栓组合 M6×30 BOLT M6×30	4
3-10	GB5781	螺栓 M8×35 BOLT M8×135	1	3-31	GB/T9074.14	六角螺栓组合 M6×16 BOLT M6×16	2
3-11	HK2.02-5	夹紧螺栓 BOLT TRANSOM CLAMP	2	3-32	HK2.5S.17-6	转架护罩 COVER BRACKET SWIVEL	1
3-12	HK2.02-5	夹紧手柄 HANDLE TRANSOM CLAMP	2	3-33	HK2.5S.17-2	转架锁紧压簧 SPRING COMPRESSION	1
3-13	GB/T6172.2	锁紧螺母 M4 NUT M4	2	3-34	GB97.1	平垫 6 WASHER 6	1
3-14	GB/819.1	十字槽沉头螺钉 M4×16 SCREW M4×16	2	3-35	HK2.02-12	拧紧螺栓 BOLT WING	1
3-15	GB/T6172.2	锁紧螺母 M5 NUT M5	2	3-36	HK2.5S.17-1 1	上倾手柄 LEVER REVERSE LOCK LINK	1
3-16	HK2.02-7	压盘 PAD TRANSOM CLAMP	2	3-37	HK2.5S.12-1 4	转轴衬套 BUSH	1
3-17	GB/T96	大垫圈 8 BIG WASHER 8	2	3-38	GB/T896	开口挡圈 5 E-RING 5	1
3-18	HK2.5S.17-1 9	支架减震圈 BRACKET WITH SHOCK ABSORPTION	1	3-39	HK2.02-11	黄油嘴 NIPPLE GREASE	1
3-19	HK2.5S.17-1 8	支架 RECELVER THRUST	1	3-40	HK2.5S.17-1 0	大转架 BIG BRACKET SWIVEL	1
3-20	HK2.5S.17-1 7	转架护圈 BRACKET GUARD RING	1				
3-21	HK2.5S.17-7	左托架夹 LEFT BRACKET CLAMP	1				

4 操纵手柄部件

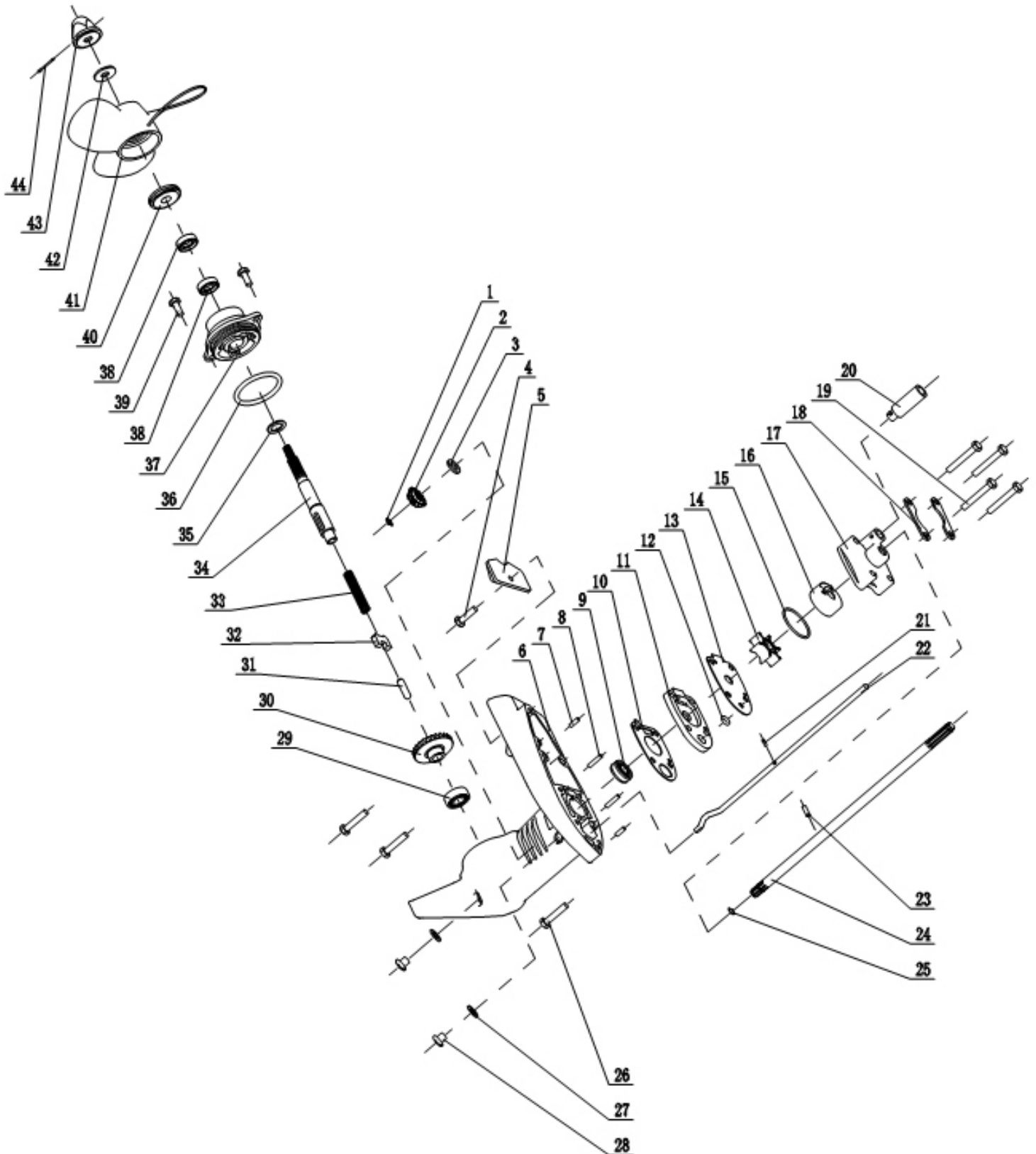
4 TILLER HANDLE



4 操纵手柄部件
4 TILLER HANDLE

序号 Ref No	图号 Part No	名称及规格 Description	数量 Q'ty	序号 Ref No	图号 Part No	名称及规格 Description	数量 Q'ty
4-1	GB5781	螺栓 M8×25 BOLT M8×25	1	4-14	HK2.5S.12-04	熄火开关 SWITCH EMERGENCY	1
4-2	HK2.5S.12 -5	操纵手柄压板 HANDLE TILLER LATHING	1	4-15	HK2.5S.12-04	熄火开关拉绳 PLATE LOCK	1
4-3	HK2.5S.12 -4	操纵手柄外衬套 EXTERNAL BUSH	1	4-16	HK2.5S.12-04	熄火开关螺母 SWITCH EMERGENCY NUT	1
4-4	HK2.5S.12 -8	压板垫圈 31.2×49×1.2 WASHER 31.2×49×1.2	1	4-17	HK2.5S.12-14	转轴衬套 BUSH	1
4-5	HK2.5S.12 -6	操纵手柄减震圈 HANDLE TILLER SHOCK ABSORPTION LOOP	1	4-18	GB/T95	平垫圈 10.7×18×1 WASHER 10.7×18×1	2
4-6	HK2.5S.12 -7	衬套垫圈 31.2×43×1 WASHER 31.2×43×1	2	4-19	HK2.5S.12-15	转轴弹簧 AXLE SPRING	1
4-7	HK2.5S.12 -9	压板波形垫圈 31.2×43×1.5 SPRING WASHER 31.2×43×1.5	1	4-20	HK2.5S.12-10	转把 HANDLE TILLER GRIP	1
4-8	HK2.5S.12 -3	操纵手柄内衬套 INTERNAL BUSH	1	4-21	GB/T819.2	沉头螺钉 M5×25 SCREW M5×25	1
4-9	HK2.5S.12 -2	操纵手柄保护套 HANDLE TILLER JACKET	1	4-22	HK2.5S.12-11	油门转杆 ROD HANDLE	1
4-10	GB/T818	十字槽盘头螺钉 M5×8 SCREW M5×8	1	4-23	HK2.5S.12-12	转杆调节器 STOPPER THROTTLE CABLE	1
4-11	HK2.5S.12 -02	油门拉线总成 CABLE THROTTLE	1	4-24	HK2.5S.12-13	转杆压板 STOPPER THROTTLE CABLE PLATE	1
4-12	HK2.5S.12 -1	操纵手柄 HANDLE TILLER	1	4-25	GB/T91	开口销 1.6×14 PIN COTTER 1.6×14	1
4-13	HK2.5S.12 -03	转轴调节螺栓 AXLE THROTTLE BOLT	1	4-26	GB/T818	盘头螺钉 M5×12 SCREW M5×12	2

5 齿轮箱部件
5 GEAR CASE



5 齿轮箱部件
5 GEAR CASE

序号 Ref No	图号 Part No	名称及规格 Description	数量 Q'ty	序号 Ref No	图号 Part No	名称及规格 Description	数量 Q'ty
5-1	GB/T896	开口挡圈 6 E-RING 6	1	5-24	HK2.5S.14-1	传动轴 DRIVE SHAFT	1
5-2	HK2.5S.14-2	主动齿轮 PINION	1	5-25	GB/T895.2	轴用钢丝挡圈 8 E-RING 8	1
5-3	HK2.5S.14-3	主动齿轮垫片 10.1×17×2 WASHER 10.1×7×2	1	5-26	GB/T9074.1	六角螺栓组合 M6×30 BOLT M6×30	3
5-4	GB/T5787	六角螺栓 M6×20 BOLT M6×20	1	5-27		石棉垫 8×15×1.2 GASKET 8×15×1.2	2
5-5	HK2.5S.16-1	阳极块 ANODE	1	5-28	GB/T65	开槽圆柱螺钉 M8×8 SCREW M8×8	2
5-6	HK2.5S.16-02	齿轮箱 CASING LOWER	1	5-29	GB276	轴承 16003 BEARING 16003	1
5-7	GB/T119	圆柱销 4×12 PIN 4×18	2	5-30	HK2.5S.14-02	从动齿轮 GEAR	1
5-8	GB/119	圆柱销 4×18 PIN 4×18	2	5-31	HK2.5S.14-5	换向挺柱 ROD PUSH	1
5-9	HK2.5S.16-4	双向油封 10×24×9 OIL SEAL 10×24×9	1	5-32	HK2.5S.14-6	拨块 SHIFTER CLUTCH DOG	1
5-10	HK2.5S.13-7	水泵隔板密封垫 GASKET WATER PUMP	1	5-33	HK2.5S.14-7	拨块弹簧 SPRING SHIFTER CLUTCH DOG	1
5-11	HK2.5S.13-8	水泵下盖 COVER WATER PUMP	1	5-34	HK2.5S.14-8	花键轴 SHAFT PROPELLER	1
5-12	HK2.5S.13-13	O 型圈 11×3.1 “O”RING 11×3.1	1	5-35	HK2.5S.14-4	花键轴垫片 13.1×20.4×1.5 WASHER 13.1×20.4×1.5	1
5-13	HK2.5s.13-6	水泵隔板 PANEL WATER PUMP	1	5-36	HK2.5S.16-6	O 型圈 54×4.5 “O”RING 54×4.5	1
5-14	HK2.5s.13-9	水泵叶轮 IMPELLER	1	5-37	HK2.5S.16-03	齿轮箱盖 CA LOWER CASING	1
5-15	HK2.5s.13-12	O 型圈 39×2 “O”RING 39×2	1	5-38	HK2.5S.16-5	油封 13×22×7 OIL SEAL 13×22×7	2
5-16	HK2.5s.13-5	水泵碗 LINER PUMP CASE	1	5-39	GB/T9074.1	六角螺栓组合 M6×16 BOLT M6×16	2
5-17	HK2.5s.13-1	水泵体 WATER PUMP CASE	1	5-40	HK2.5S.16-3	螺旋桨垫块 THRUST HOLDER PROELLER	1
5-18	HK2.5s.13-10	水泵压板 BOARD FOR NATER PUMP	2	5-41	HK2.5S.16-01	螺旋桨总成 ROELLER	1
5-19	GB5781	螺栓 M6×40 BOLT M6×40	4	5-42	GB/T96	大垫圈 8 BIG WASHER 8	1
5-20	HK2.5S.13-3	水泵出水口密封套 DAMPER WATER SEAL	1	5-43	HK2.5S.16-2	压紧螺母 NUT	1
5-21	GB/879.2	弹性圆柱销 2.5×10 SPRING PIN 2.5×10	1	5-44	GB/T191	开口销 2.5×32 IN COTTER 2.5×32	1
5-22	HK2.5S.11-4	变挡拉杆 GEAR POLE	1				
5-23	GB/119	圆柱销 3.5×7 PIN 3.5×7	1				